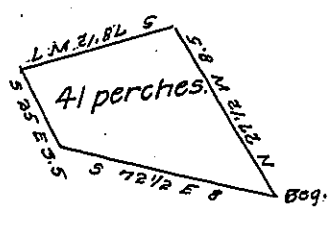


FORM NO. 1.

York County Shore



Lancaster County Shore

A Draught of an Island situate in the township of Manor in the County of Lancaster Called Rock Island near the York County Shore, about half a mile from the mouth of Fishing creek nearly six hundred yards south of Mussers & Bears fisheries immediately below turkey hill falls, containing forty one perches strict measure, surveyed in pursuance of a warrant dated 21<sup>st</sup> day of January Anno. Dom. 1822, granted to Jacob Etter,

Henry Carpenter

To Gabriel Hiester Esqr.  
Surveyor General.

Examined and Certified the 3<sup>d</sup>. May  
1830. Pr. Jacob Hiestman D.S.

IN TESTIMONY that the above is a copy of the original remaining on file in the Department of Internal Affairs of Pennsylvania, made conformably to an Act of Assembly approved the 16th day of February 1833, I have hereunto set my hand and caused the Seal of said Department to be affixed at Harrisburg, this third day of January 1908

*Henry Howick*  
Secretary of Internal Affairs.